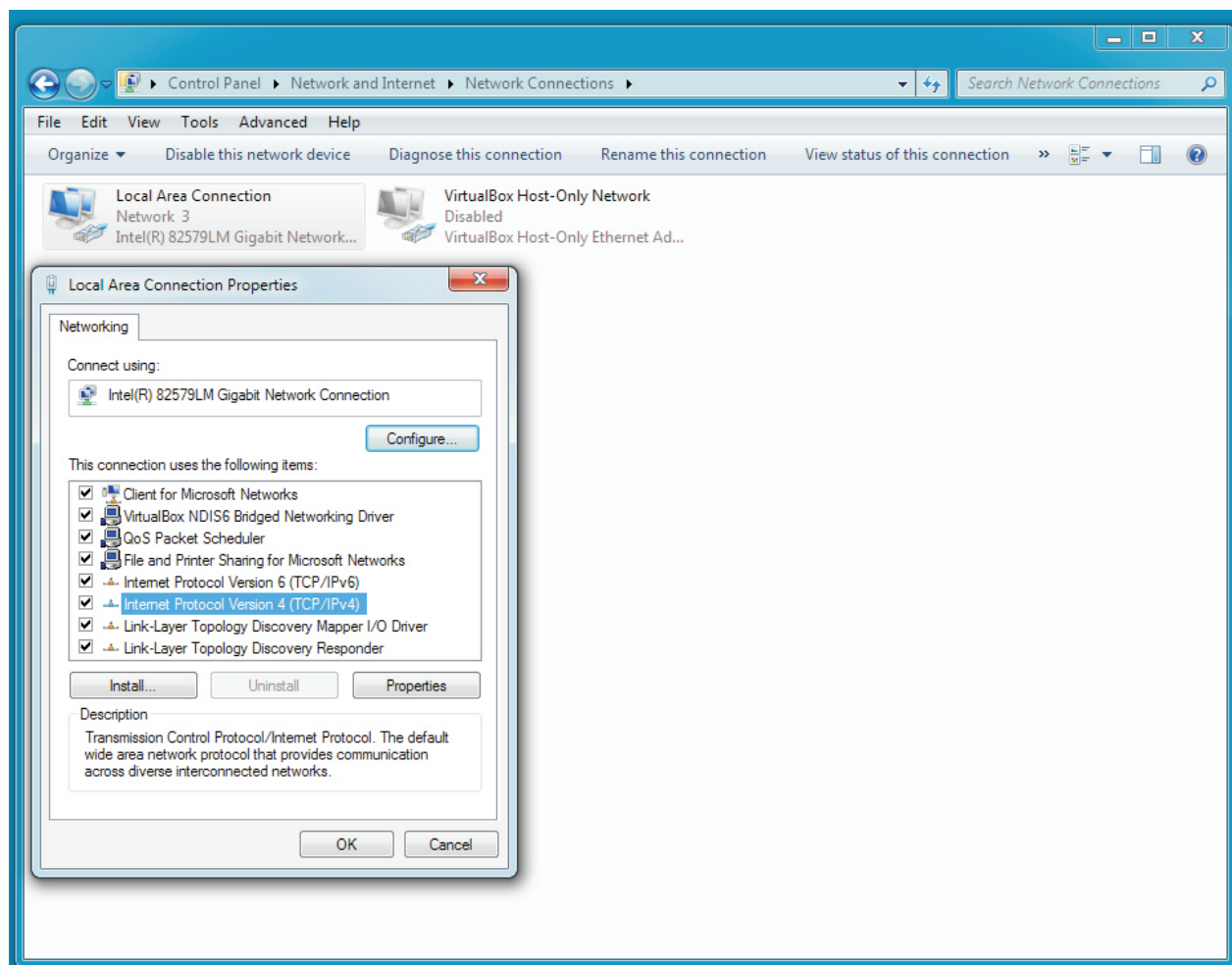


ArtNet Setup

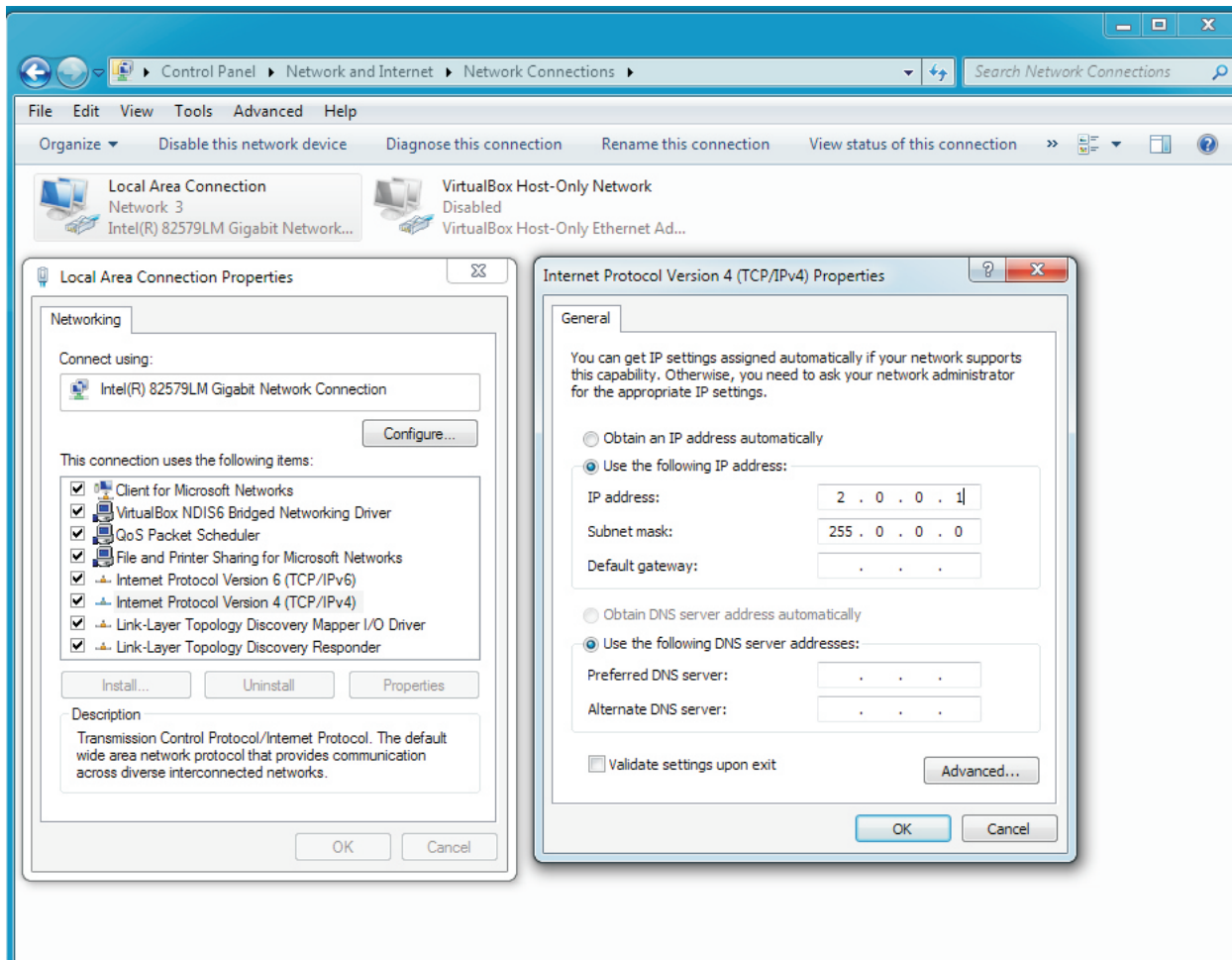
Setting up artnet on your PC requires special process described below. We recommend using the network card to ONLY send artnet, the network card that handles the internet connection will need to be separate.

1. Locate your network adaptor settings screen as shown below, different OS will show it differently but generally can be found under properties of the Network adaptor you will be using to connect to the MegaNode 8.



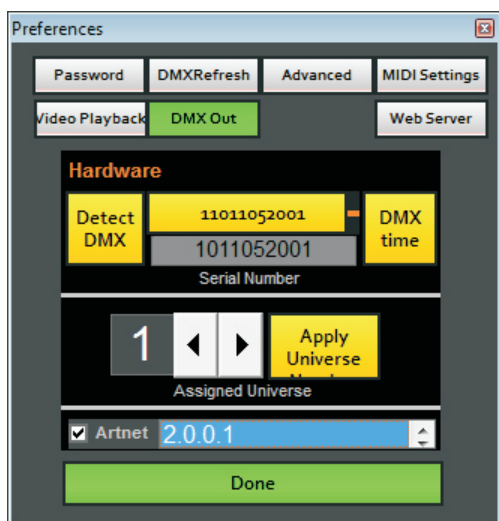
ArtNet Setup

Enter the information as seen below. The IP and netmask are important to make sure the Node will receive the data sent via artNet.



Once Set, connect the Node to the PC via an ethernet cable.
In Disco or Enlighten got the settings window and select the DMX out tab.

Make sure to select the IP as set above, and check the enable Artnet checkbox



The artnet out 1 on the Node should illuminate indicating Artnet output on universe 1.

For as many universes as patched up to 24, the node will now output the DMX for those universes.

Keep in mind this feature is available only in the Enlighten+ and Disco+ products.

For further support contact Winston Potgieter at 210-286-2975