

**Mike Wood Consulting LLC**

3705 Ebony Hollow Pass, Austin, TX 78739  
Phone: (512) 288-4916  
Cell: (512) 656-6377  
[www.mikewoodconsulting.com](http://www.mikewoodconsulting.com)

## Megalite Deco CITYSCAPE Q30 LED

December 6, 2021

### Electrical

Voltage: 120 V AC, 60 Hz

Power: 35 W (*CV1 Driver*)

VA: 46.5 VA (*CV1 Driver*)

Current: 0.37 A (*CV1 Driver*)

PF: 0.75 (*CV1 Driver*)

### Output with all emitters RGBW at full

Lumens at full output	Efficacy
1097	31 lm/W

# Color Rendering - White Emitter Only

CCT: 4160 K

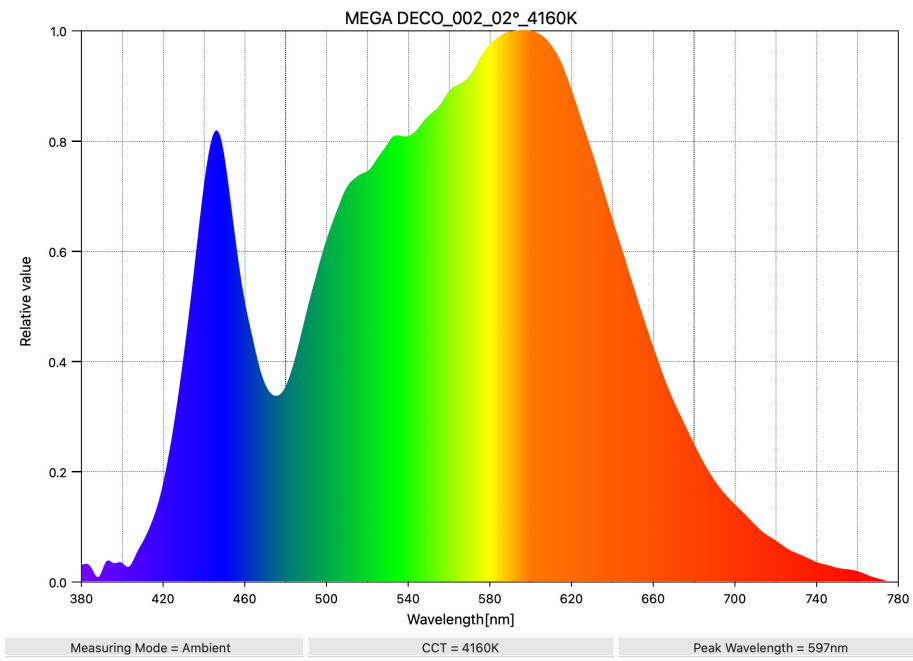
Duv: 0.0045

CRI (Ra): 85

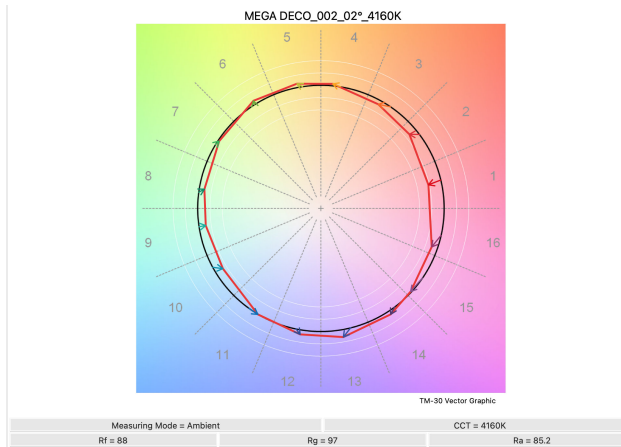
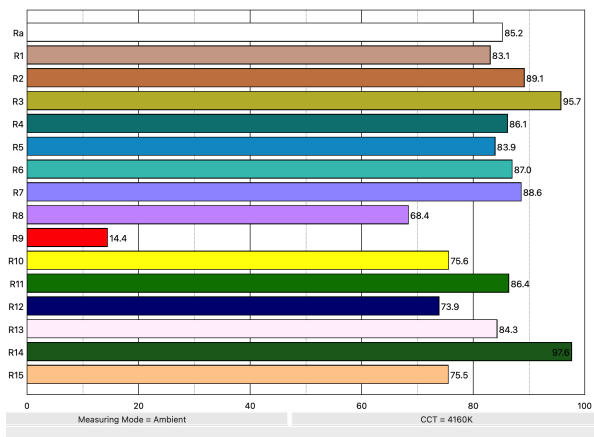
TM-30 Rf: 88

TM-30 Rg: 97

## Spectrum



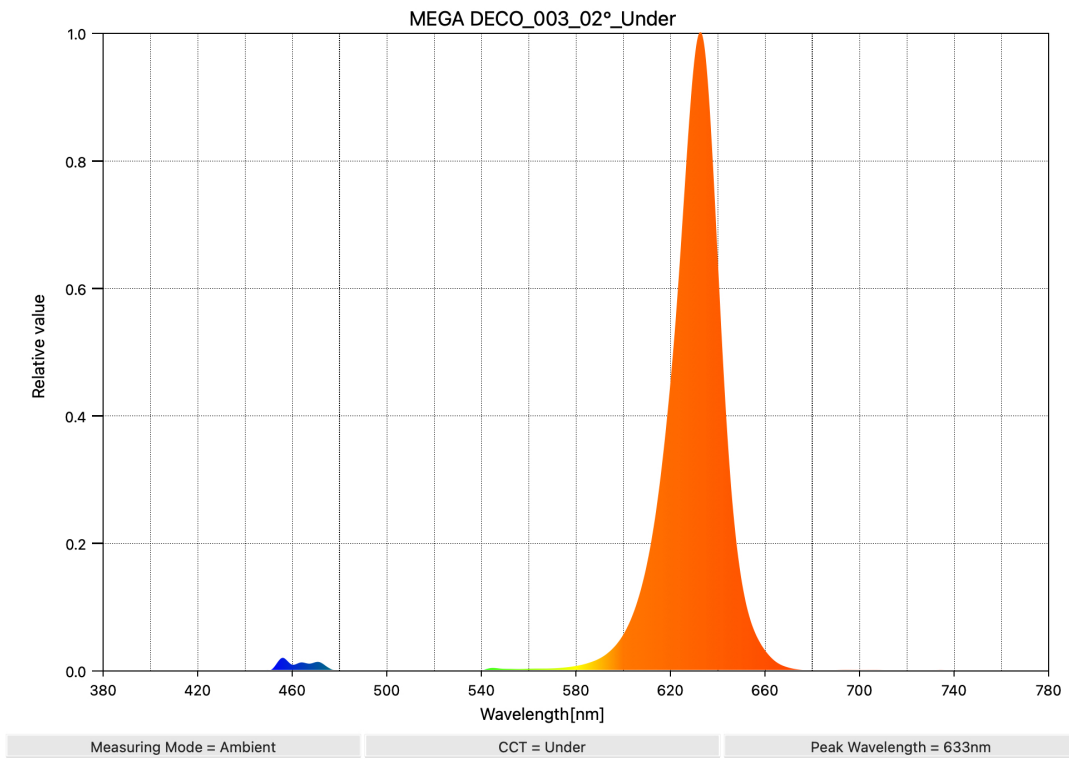
## Color Rendering



## Red Emitter Only

Peak Wavelength: 633 nm

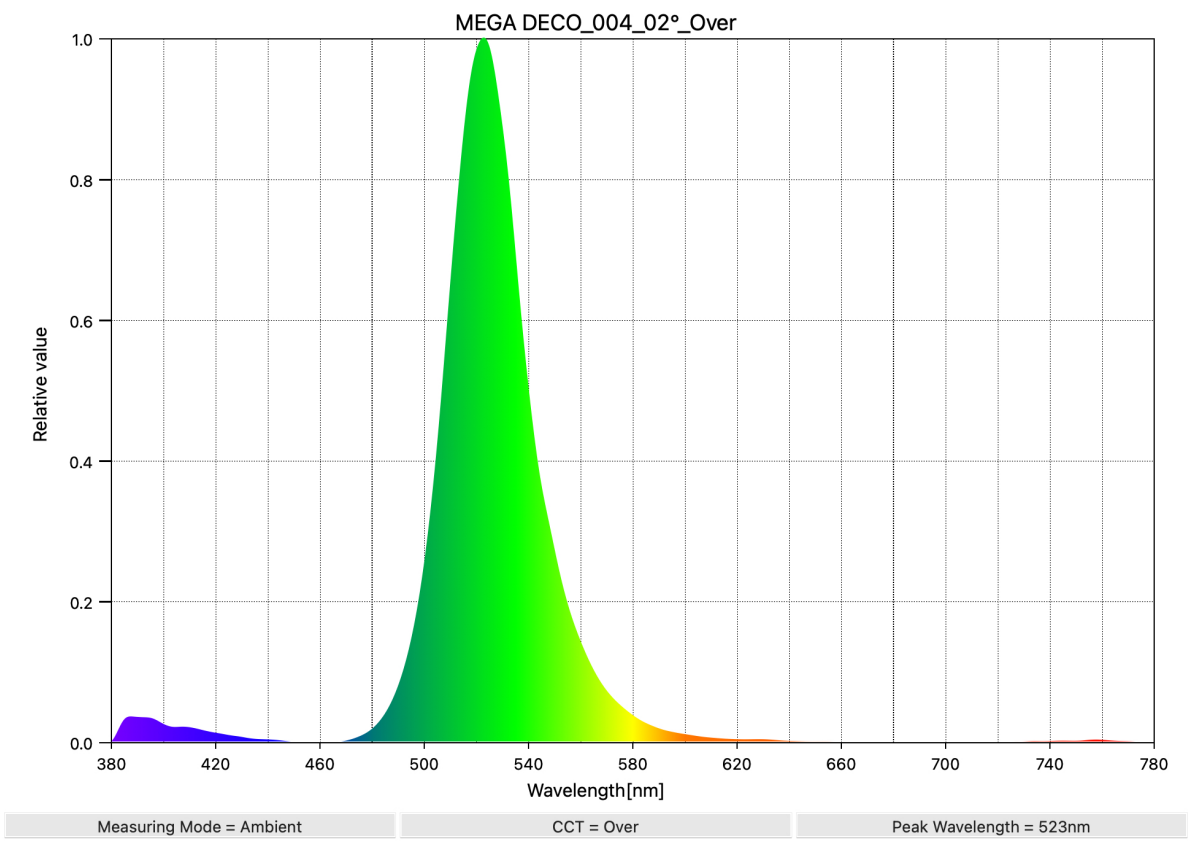
CIE 1931 x,y: 0.6824, 0.3004



## Green Emitter Only

Peak Wavelength: 523 nm

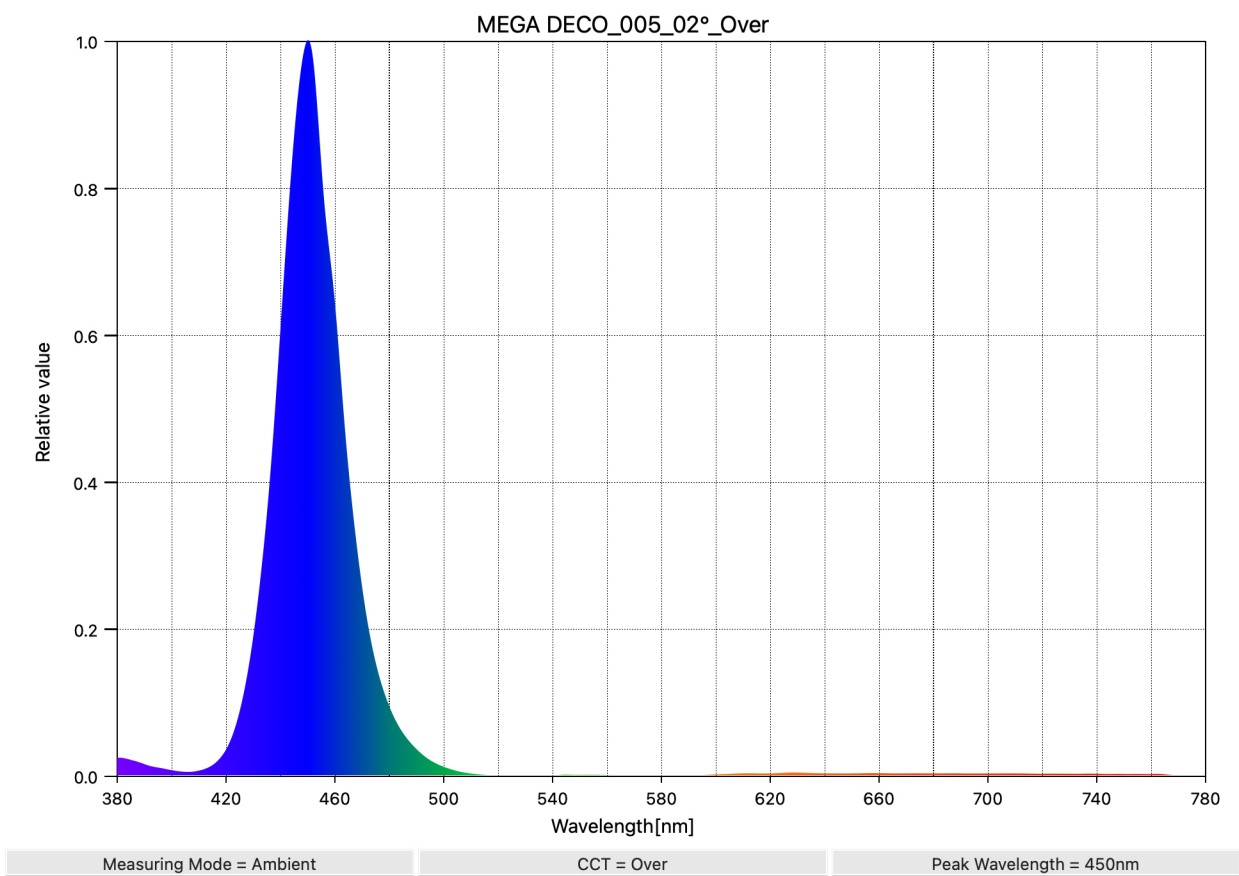
CIE 1931 x,y: 0.1770, 0.7265



## Blue Emitter Only

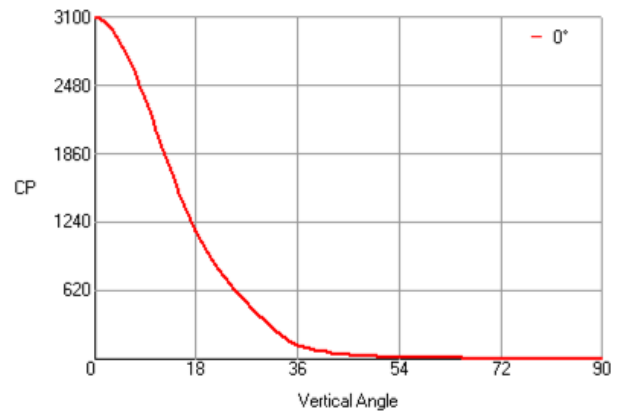
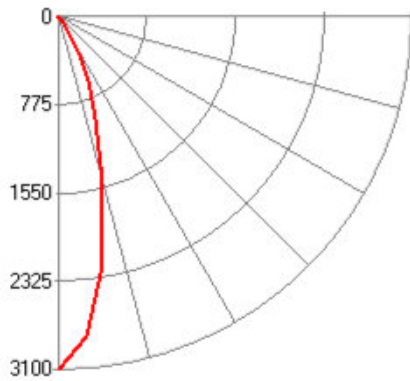
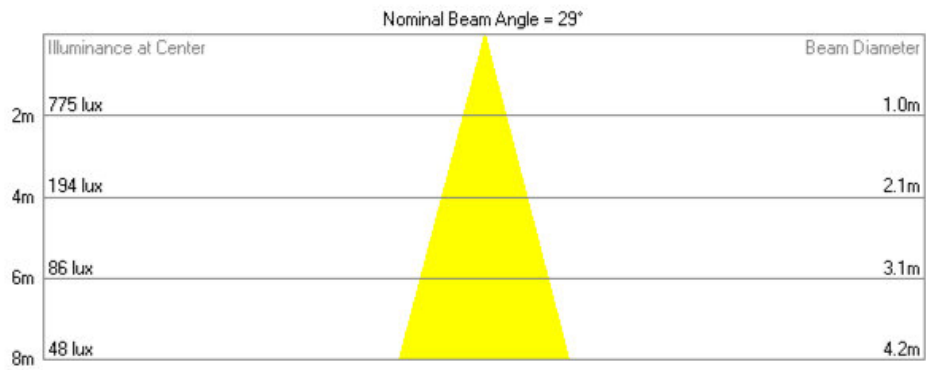
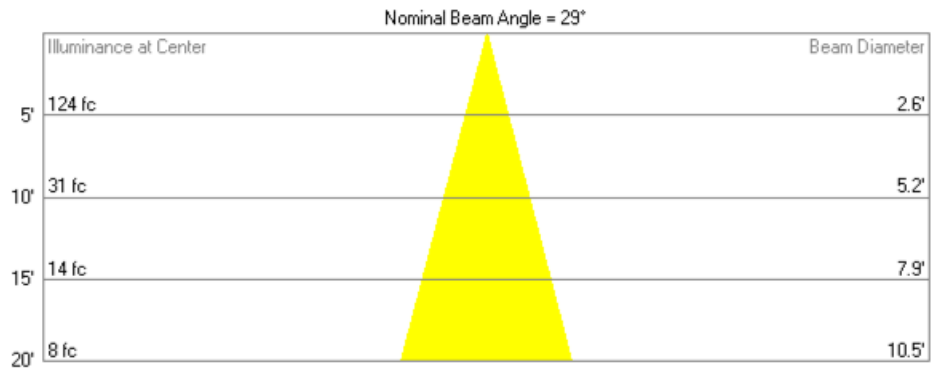
Peak Wavelength: 450 nm

CIE 1931 x,y: 0.1535, 0.0262



# Full Output All Emitters

Lumens at full output: 1097 lm



## Zonal Lumen Summary

Zone	Lumens
0° - 15°	474
0° - 30°	957
0° - 45°	1076
0° - 60°	1094
0° - 90°	1097
0° - 180°	1097

## Candela Distribution:

0.0°	3099	31.0°	300	62.0°	5
1.0°	3087	32.0°	256	63.0°	5
2.0°	3045	33.0°	216	64.0°	4
3.0°	2991	34.0°	180	65.0°	3
4.0°	2919	35.0°	150	66.0°	0
5.0°	2829	36.0°	126	67.0°	0
6.0°	2733	37.0°	105	68.0°	0
7.0°	2619	38.0°	89	69.0°	0
8.0°	2487	39.0°	77	70.0°	0
9.0°	2360	40.0°	67	71.0°	0
10.0°	2222	41.0°	58	72.0°	0
11.0°	2066	42.0°	49	73.0°	0
12.0°	1916	43.0°	43	74.0°	0
13.0°	1778	44.0°	37	75.0°	0
14.0°	1640	45.0°	31	76.0°	0
15.0°	1508	46.0°	28	77.0°	0
16.0°	1375	47.0°	24	78.0°	0
17.0°	1255	48.0°	21	79.0°	0
18.0°	1153	49.0°	19	80.0°	0
19.0°	1057	50.0°	16	81.0°	0
20.0°	961	51.0°	14	82.0°	0
21.0°	889	52.0°	13	83.0°	0
22.0°	811	53.0°	12	84.0°	0
23.0°	745	54.0°	11	85.0°	0
24.0°	679	55.0°	10	86.0°	0
25.0°	619	56.0°	9	87.0°	0
26.0°	559	57.0°	8	88.0°	0
27.0°	511	58.0°	7	89.0°	0
28.0°	450	59.0°	7	90.0°	0
29.0°	396	60.0°	6		
30.0°	348	61.0°	5		