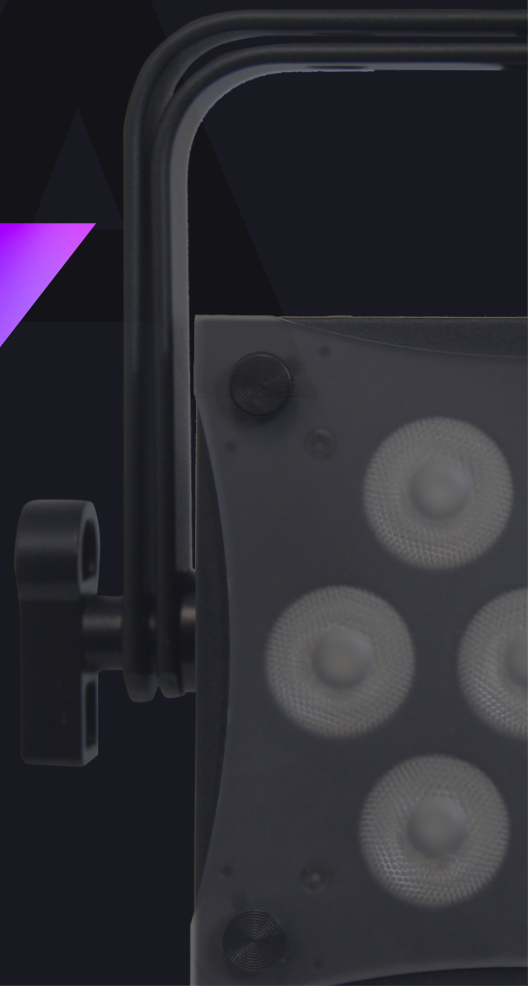


baby 
COLOR_{Q70}





DESCRIPTION

The Baby Color Q70 is a bright color-changing fixture that's ultra-compact in size. Equipped with seven 10-watt LEDs and less than a 5" square body, the Baby Color Q70's output contends with that of larger fixtures. The RGBW quad-chip LEDs produce a wide range of colors, including pastel shades. They also make the face of the LEDs appear uniform in color. The fixture has a 20° beam angle and a diffuser that increases the beam angle to 25°.

The Baby Color Q70 is controllable via DMX 512 and has strobe, macro, and dimmer effects. It also has control options, an audio trigger, and one central unit that controls secondary units with the same program when connected with DMX. The Baby Color Q70 has a double mounting yoke, which can be set on the floor or hung from a structure. It has a digital display designed for ease of use. It has power con in and out and can be ordered in either 3-pin or 5-pin XLR connection inputs and outputs.

The baby color series has several options and even has an IP-rated sister, the Tuff Baby.



Features



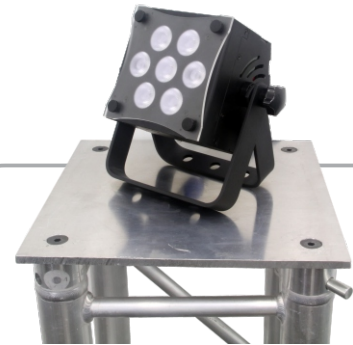
COMPACT

This compact, powerful fixture is just five pounds, making it ideal for touring or permanent installations.



RGBW

Seven 10W RGBW LEDs allow for color mixing with red, green, blue, and white.



UNIQUE EFFECTS

Using DMX 512, create dimmer, strobe and macro effects.

Specifications

Mechanical Specifications:

Power connection:	Powercon type in and out
Signal connection:	3 Pin XLR connectors in and out
Lens angle:	20°
Diffusion angle:	25°
Fastening system:	Dual mounting yoke

Control Systems:

Control protocols:	DMX 512, Audio trigger, master follow units
Channel modes:	3 modes of operation Mode 1: 3 channel mode Mode 2: 4 channel mode Mode 3: 7 channel mode
Display:	LED

Electrical Specifications:

Light source:	7 X 10W RGBW LEDs
Color temperature:	8125K
CRI (warm white)	74
Lumen output:	2319 lm
Power supply:	110V - 240V AC 50/60 Hz
Power consumption:	48 Watts I .74 Amps

Size and Weight:

Fixture size:	8.25" X 4" X 7.25"
Fixture weight:	5 lb (2.27 kg)
Packaged size:	10.25" X 9.5" X 6.25"
Packaged weight:	6 lb (2.72 kg)



18662 Bandera Rd
Helotes, TX 78023

Phone (210)684-2600 / Fax (210)855-6279
info@mega.lighting

m e g a . l i g h t i n g